



LG INNOTEK SECURITY SOLUTION

BEST SECURITY SOLUTION PARTNER – LG INNOTEK
WILL BE WITH YOU FOR YOUR SUCCESSFUL BUSINESS.



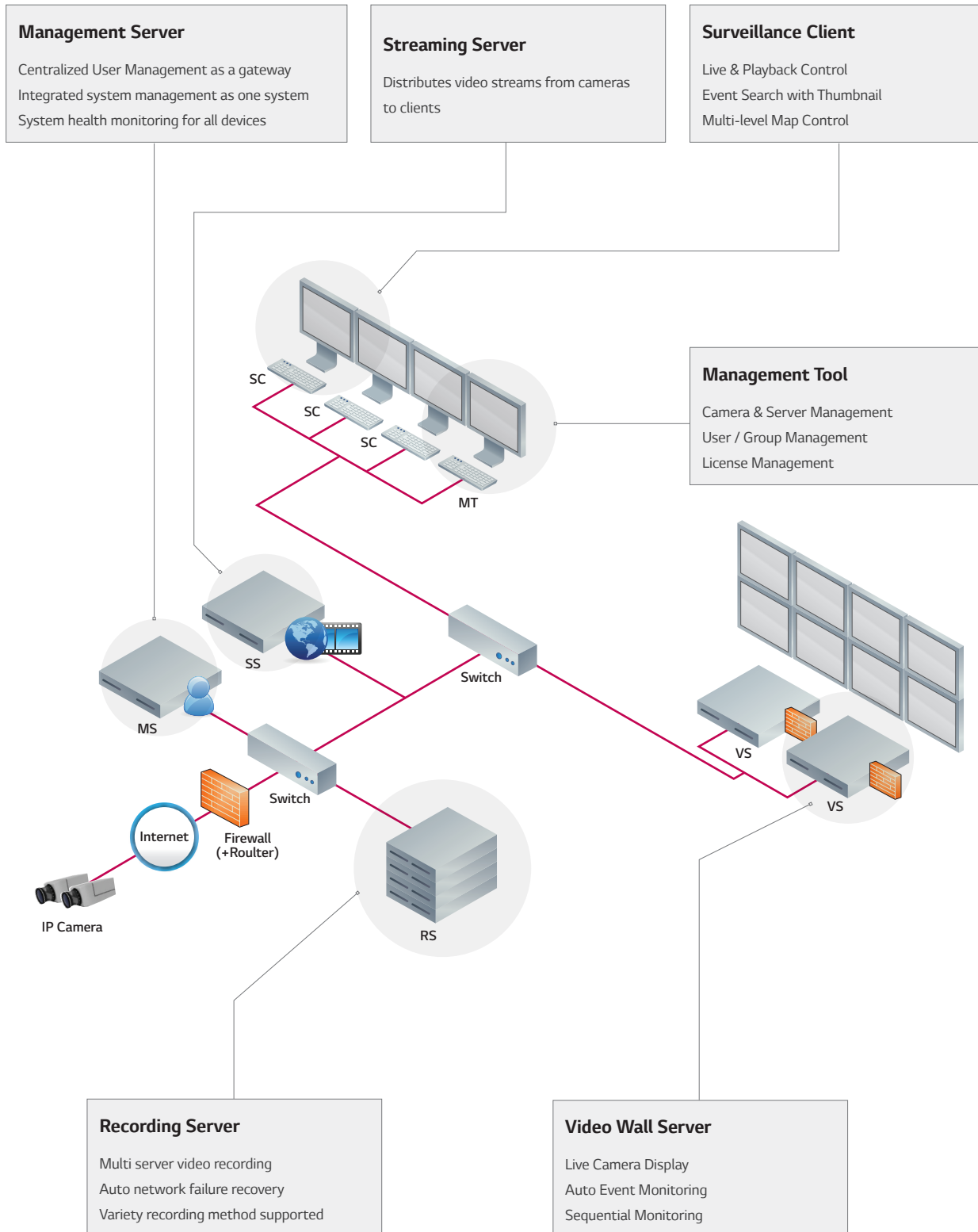


NVR

Features		RNRZ-B510A	RNRZ-B520A
Video	IP Camera Input	10 channels	20 channels
	Resolution	QCIF, CIF, 2CIF, DCIF, 4CIF, VGA, 720P (1280x720), UXGA, 1080P (1920x1080), 3MP (2048x1536), 4MP (2560x1440), 5MP (2560x1920), 6MP (2752x2208), 4K (3840x2160)	QCIF, CIF, 2CIF, DCIF, 4CIF, VGA, 720P (1280x720), UXGA, 1080P (1920x1080), 3MP (2048x1536), 4MP (2560x1440), 5MP (2560x1920), 6MP (2752x2208), 4K (3840x2160)
	Video Compression	H.264, H.265	H.264, H.265
Live View	Local Display	1 x HDMI, 1 x VGA	1 x HDMI, 1 x VGA
	Multi Screen Display (Monitor)	1, 4, 6, 8, 9, 10	1, 4, 6, 8, 9, 10, 16, 20
	Function	E-Zoom	E-Zoom
Recording	Resolution	QCIF, CIF, 2CIF, DCIF, 4CIF, VGA, 720P (1280x720), UXGA, 1080P (1920x1080), 3MP (2048x1536), 4MP (2560x1440), 5MP (2560x1920), 6MP (2752x2208), 4K (3840x2160)	QCIF, CIF, 2CIF, DCIF, 4CIF, VGA, 720P (1280x720), UXGA, 1080P (1920x1080), 3MP (2048x1536), 4MP (2560x1440), 5MP (2560x1920), 6MP (2752x2208), 4K (3840x2160)
	Mode	Manual, Continuous, Schedule, Event (Pre/Post)	Manual, Continuous, Schedule, Event (Pre/Post)
	Event Trigger	Manual, Timing, Motion detection, Port alarm, VCA alarm, Video occlusion	Manual, Timing, Motion detection, Port alarm, VCA alarm, Video occlusion
	Tag	Yes	Yes
Search & Playback	Search Mode	Ch No., Record type, Date & Time, File type & VCA	Ch No., Record type, Date & Time, File type & VCA
	Resolution	QCIF, CIF, 2CIF, DCIF, 4CIF, VGA, 720P (1280x720), UXGA, 1080P (1920x1080), 3MP (2048x1536), 4MP (2560x1440), 5MP (2560x1920), 6MP (2752x2208), 4K (3840x2160)	QCIF, CIF, 2CIF, DCIF, 4CIF, VGA, 720P (1280x720), UXGA, 1080P (1920x1080), 3MP (2048x1536), 4MP (2560x1440), 5MP (2560x1920), 6MP (2752x2208), 4K (3840x2160)
	Synchronized Playback	4ch@4K, 6MP, 5ch@5MP, 8ch@4MP, 9ch@3MP, 10ch@1080P	4ch@4K, 6MP, 5ch@5MP, 8ch@4MP, 9ch@3MP, 16ch@1080P
Storage	Max. Internal HDDs	4 x 3.5" HDD (Max. 24TB, 6TB / each)	4 x 3.5" HDD (Max. 24TB, 6TB / each)
	RAID	None	None
	E-SATA	None	None
Event	Event Triggers	Manual, Timing, Motion detection, Port alarm, VCA alarm, Video occlusion	Manual, Timing, Motion detection, Port alarm, VCA alarm, Video occlusion
	Event Notification	Recording, Email	Recording, Email
Network	Open Protocol	ONVIF (Profile S)	ONVIF (Profile S)
	Network Protocol	TCP / UDP / HTTP / MULTICAST / UPnP / DHCP / PPPoE / DDNS / NFS / FTP / NTP / HTTPS / RTSP / SMTP / SADP	TCP / UDP / HTTP / MULTICAST / UPnP / DHCP / PPPoE / DDNS / NFS / FTP / NTP / HTTPS / RTSP / SMTP / SADP
	Max. Connections	Up to 32 users / 160ch videos	Up to 32 users / 160ch videos
	Web Viewer	IE8, IE9, IE10, IE11, Chrome30, Firefox24	IE8, IE9, IE10, IE11, Chrome30, Firefox24
Interface	Ethernet	1 x 10 / 100 / 1000M	1 x 10 / 100 / 1000M
	Video Out	1 x HDMI (up to 3840x2160 @ 60Hz) 1 x VGA (up to 1080p @ 60Hz)	1 x HDMI (up to 3840x2160 @ 60Hz) 1 x VGA (up to 1080p @ 60Hz)
	Audio In / Out	1 In / 1 Out (RCA)	1 In / 1 Out (RCA)
	Alarm In / Out	16 In / 4 Out	16 In / 4 Out
	Control	N/A	N/A
	USB	1 x USB 2.0, 1 x USB 3.0	1 x USB 2.0, 1 x USB 3.0
	Power Source	DC 12V / 3A	DC 12V / 3A
	Max. Power Consumption	40W (without HDD)	40W (without HDD)
General	Operating Temperature / Humidity	-10°C - 50°C / 10% - 90%RH	-10°C - 50°C / 10% - 90%RH
	Standard Approvals	CE, LVD, KC	CE, LVD, KC
	Language	English, Korean, Turkish, Chinese, Spanish, Japanese	English, Korean, Turkish, Chinese, Spanish, Japanese
	Dimensions	75 x 440 x 347 mm	75 x 440 x 347 mm
	Weight	3.8 Kg (HDD not included)	3.8 Kg (HDD not included)

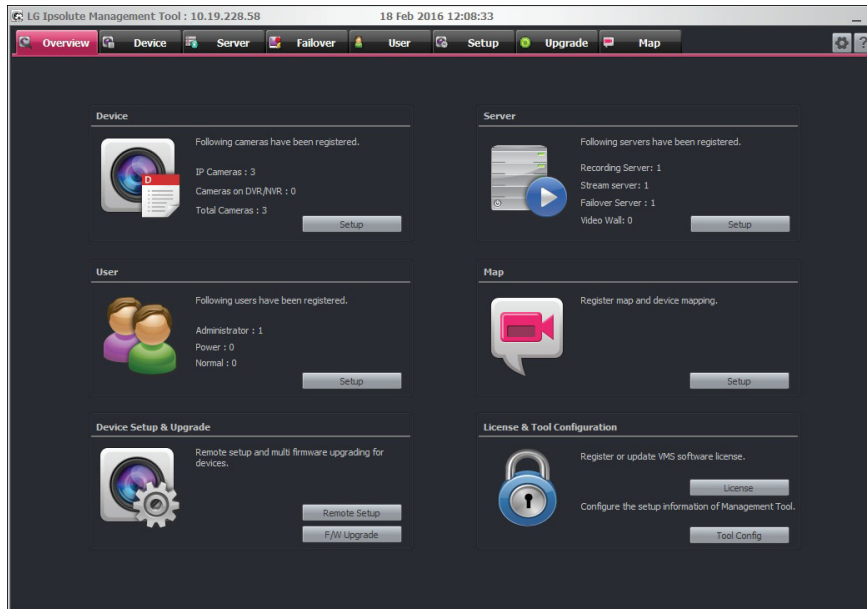
※ Exact products and specifications shown may vary by geographic region and are subject to change without notice. Actual products may differ from the images appearing in the catalog.

System Guide



Management Tool

Users can easily check system overview on overview page. It is simple and gives intuitive user interface so that even unprofessional users can use easily.



Device

Displays the number of registered IP cameras and DVRs.

Server

Displays the number of registered recording servers and streaming servers.

User

Displays the number of registered users by user group.

MAP

Register map and device mapping

Device Setup & Upgrade

Remote setup and multi-firmware upgrading for device.

License & Tool Configuration

Register or update VMS software license.

Surveillance Client Overview



Title Bar and Menu

Title bar with local time and software function menu (mouse right click)

Login Information and System Button

Login information, software log, setup, and help button

TAB

Each tab has its own operational features (live, playback, event and map).

Workspace

Live video, recording video, retrieved events and map(varied according to the tab).

CPU / Network Performance

CPU / Network Performance of the Computer with Surveillance Client Software

Tree and List

Camera tree, live event list, and map tree (varied according to the tab).

Control Button

Workspace control button such as camera division and video export.

Surveillance Client _ Live

Users can watch live video of a selected IP device.



Camera Tree

Pre-configured camera tree is displayed with camera connection status.

Auto

Event-occurred camera will be displayed on the screen automatically.

Action Button

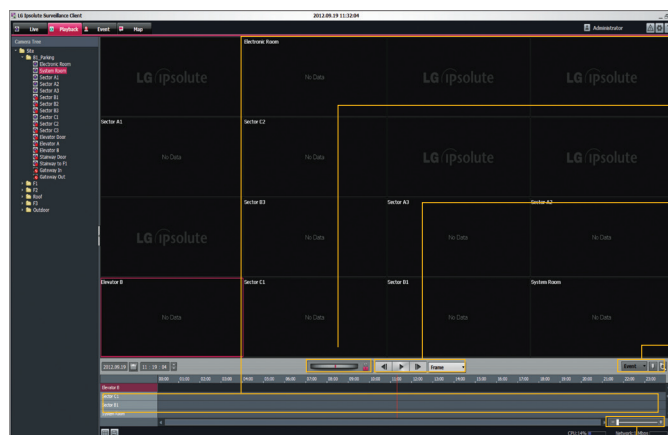
- Division
- Hotspot
- Sequence
- Save Layout

Live Event

Events on cameras that are displaying are listed in real-time.

Surveillance Client _ Playback

Users can play back the recorded data of a selected IP device.



Multi Timeline Display

Max 64 cameras can be displayed with color-classified timeline according to the recording type.

Playback Speed Control

Jog shuttle type fast forward and rewind control.

Frame By Frame / Play & Pause

- Step forward and backward by frame and 10, 60, 120 sec unit.
- Step to next event
- Step to next bookmark.

Event

Type of events can be selected.

Zoom In / Out

Timeline zoom in and out

Surveillance Client _ Event

Users can search event log history, playback event data and check the map.

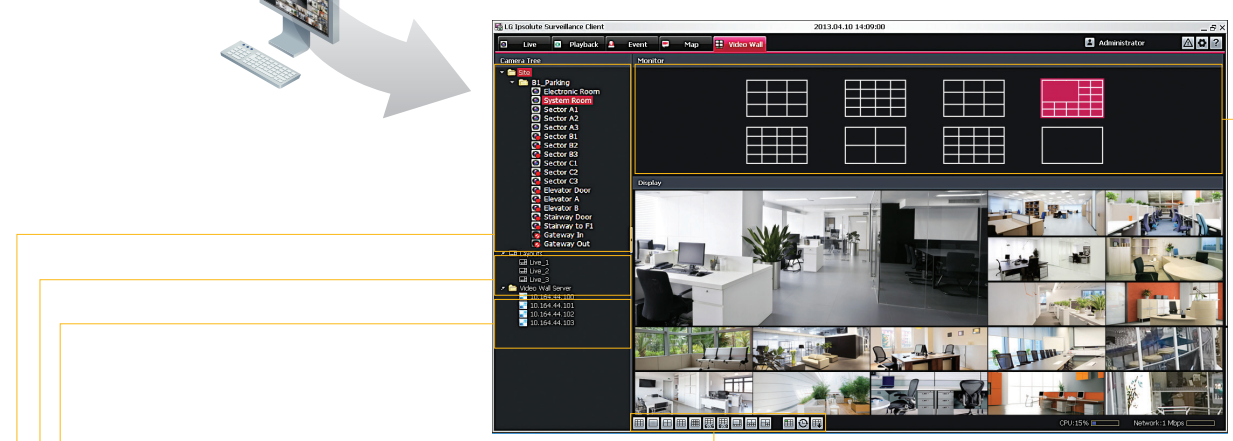
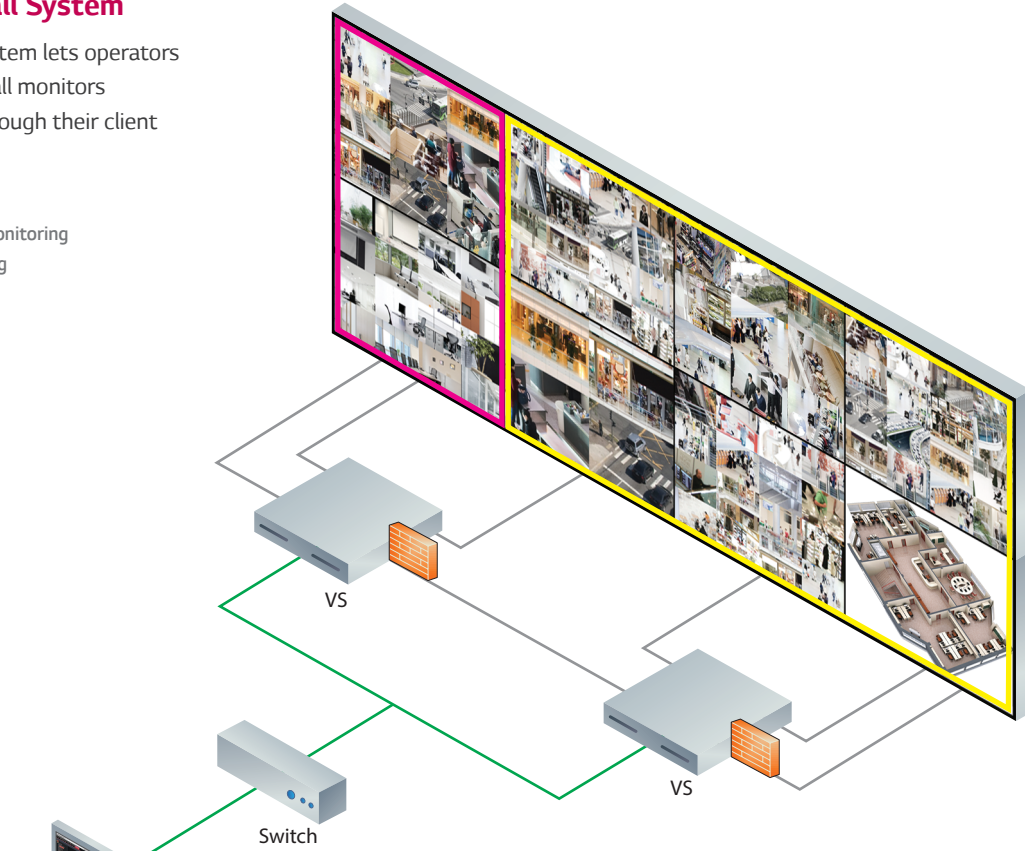
Surveillance Client _ Map

This function gives a visual overview of the device in your surveillance environment.

VMS Video Wall System

VMS Video Wall System lets operators control the video wall monitors in control center through their client software.

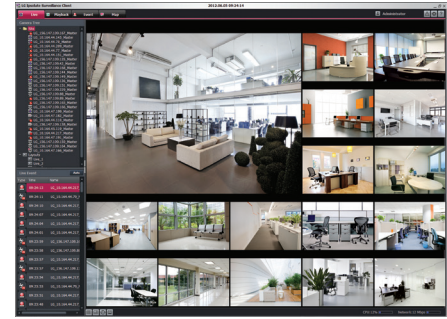
- Sequencing Monitoring
- Live Monitoring
- RGB
- LAN



- Camera Tree _ Video Wall Server**
Display Video Wall Server's list
- Camera Tree _ Layout**
Display layout list, that is registered for the selected monitor.
- Camera Tree _ Site**
Pre-configured camera tree is displayed with camera connection status.
- Action Button**
Configure several settings quickly using the Action Button
 - Division mode changing
 - Auto Event monitoring
 - Layout and sequence monitoring
- Monitor**
When selecting a Server, the virtual monitor icon will be changed in the Monitor Window

LVI510

IPSOLUTE VIDEO MANAGEMENT SUITE



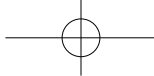
FEATURES

- Device Finder
- Device(IP Camera & DVR) Remote Setup
- Real-Time Recording Server Monitoring
- Recording Calculator
- Real-Time Streaming Server Monitoring
- 256 Channels Live Monitoring with Video Buffering
- Multiple Device Firmware Update
- Multiple Playback at the Same Time
- Event Thumbnail Search
- Instant Playback
- Digital Zoom
- Camera Pan / Tilt / Zoom Control (Mouse, Joystick Support)
- Map Support
- AVI File Export
- Intelligent Video Analytics Event Detection
- Map and Event Live Popup Display
- 320 Channels Recording, 256 Channels Streaming

	Model	LVI510
Overview	Client	Surveillance Client, Management Tool, Web Client
	Servers	Management Server, Recording Server, Streaming Server
	Access	Local and Remote
	Licensing	License Key
	Solution Approach	Distributed Server Architecture
	Language	English, Korean, Japanese, Chinese, Portuguese, Turkish
	Operatable OS	Microsoft Windows 7 Professional or Ultimate 32-bit/64-bit Microsoft Windows 8, 8.1 Professional or Ultimate 32-bit/64-bit Microsoft Windows 10 Professional or Ultimate 32-bit/64-bit Microsoft Windows Server 2008 Standard Edition SP2 32-bit/64-bit Microsoft Windows Server 2008 Enterprise Edition SP2 32-bit/64-bit Microsoft Windows Server 2008 Standard/Enterprise Edition R2 32-bit/64-bit Microsoft Windows XP Pro SP2/SP3 32-bit/64-bit Microsoft Windows Server 2012 R2
	Control Panels	Live, Playback, Event Search, Map
	Max. Channels	256
	Multi Monitor Support	Yes
	Pre-defined Screen Format	Yes
	CPU and Network Usage	Yes
	Device Group	Yes
	Interactive E-Map	Yes
Device	Device Setup	Yes
	Device Search	Yes
	Multi Device Upgrade	Yes
	Device Grouping	Yes
	Map Integration	Yes
	Recording Calculator	Yes
User	User Grouping	Yes
	Detailed Access Authority	Yes
Maintenance	Camera Health Monitoring	Yes
	Server Health Monitoring	Yes
Recording	Number of Cameras	320
	Max. Bandwidth	300 Mbps(Based on Gigabit Ethernet)
	Recording Frame Rate	Real-Time for all channels
	Time Scheduled Recording	Yes
	Event Triggered Recording	Yes
	Pre-Event Recording	Yes
Instant Recording	Yes	

	Model	LVI510
Recording	Failover	Yes
	Audio Recording	Yes
Streaming	Max. Channels	256
	Max. User	50
	Max. Bandwidth	300 Mbps(Based on Gigabit Ethernet)
Live	PTZ Control	Yes
	Full Screen	Yes
	Event Monitoring	Yes
	User-defined Layouts	Yes
	Layouts Rotation Monitoring	Yes
	Auto Event Monitoring	Yes
	Digital Zoom	Yes
	Hotspot	Yes
	Instant Playback	Yes
	Instant Recording	Yes
	Two-way Audio	Yes
	Dynamic Stream Changing	Yes
	Date/Time Search	Yes
	Calendar Search	Yes
Timebar Search	Yes	
Playback	Zoomable Time Table	Yes
	Multi Channel Time Table	Yes
	Jog Shuttle	Yes
	Playback Control	Play, Forward, Backward, Pause
	Step Playback	Frame, 10Sec, 30Sec, 1Min, 5Min, Event, Bookmark
	Video Export	AVI, DAT (LG)
Event	Image Export	JPEG
	Event Search	Yes
	Digital Zoom	Yes
	Bookmark	Yes
	Instant Playback	Yes
	E-Map Integration	Yes
Map	Thumbnail Image	Yes
	Multi-Map Monitoring	Yes
	Event Alert(Sound) on Map	Yes
	Live & Playback Intergradation(Live Popup)	Yes

※ Exact products and specifications shown may vary by geographic region and are subject to change without notice. Actual products may differ from the images appearing in the catalog.



15F, LG Seoulstation Bldg., 98, Huam-ro, Jung-gu, Seoul, 04637, Korea

TEL : +82-2-2673-1549

e-mail : lgsecurity@lginnotek.com

secu-iot.lginnotek.com



The eco-friendly label is attached to those products which have passed LG Electronics' rigorous environmental criteria that evaluate 6 hazardous materials (lead, mercury, cadmium, etc.)
※ Exact products and specifications shown may vary by geographic region and are subject to change without notice. Actual products may differ from the images appearing in the catalog.

